



# 2015 SUSTAINABILITY CONSTRUCTION FORUM

## GREEN POWER



In Association with



**Metro**

# CUSTOM HANDMADE AWARDS

Handmade awards was custom designed by 84-years old Mr. Gene Woods



These onyx plaques have been given worldwide. Recipients have included many famous athletes, politicians, civic leaders as well as entertainment celebrities including:

- Elizabeth Taylor,
- Magic Johnson,
- Arnold Schwarzenegger,
- Thomas Bradley.

CONTACT GENE TODAY!  
(310) 753-4915

# WELCOME

Sustainability has been part of many organization's operations. Many have adopted these principles for a number of reasons to include environmental stewardship, organizational economic benefits, or enhancement of social conditions in areas where the organization operates.

Los Angeles has never seen an unprecedented amount of construction on many fronts, majority of which will dramatically change the way we travel to our destinations, change the way we use our limited resources, or the way we live our daily lives.

Agencies have the vision to ensure environmental stewardship and sustainability principles are implemented; while constructors and vendors have considered these strategies in many projects, but often ask for consistency and uniformity of implementation.

We have also seen interest from private equity firms to invest in public infrastructure projects. This has consistently been true in emerging economies, but remains elusive locally.

It is our desire to bring all if these stakeholders together in this 2015 Sustainability Construction Forum; allowing for a free flow of conversation to learn best practices from one another, to understand

the tools that should be used, and to be aware of financial and human capital available to accelerate the implementation of a regional sustainability framework in construction projects.

The Los Angeles Sustainability Coalition consists all of us: agencies, vendors, constructors, funders. We are empowered to work together, now!

Much work still needs to be done; and we are committed to collaborating with you on future classes, workshops, and meetings. In the meantime, we hope you enjoy this Forum. Collaboration, conversation and action.

In partnership with LA Metro and Los Angeles Sustainability Coalition the future is now!



Dr Sherman Gay  
Event Chairman



# Kleinfelder translates **climate risk** into practical solutions.



Serving transportation departments, municipalities, military agencies, and private institutions, Kleinfelder's **multidisciplinary team** includes internationally recognized leaders in climate science, infrastructure resiliency, vulnerability assessment, disaster planning and response, public health, and adaptation.

## Our capabilities include:

- Climate Projections
- Vulnerability Assessment
- Risk Analysis
- Disaster Planning
- Adaptation Strategies
- Resilient Design
- Stakeholder Engagement
- 3D Modeling & Visualization
- Economic Analysis

contacts:

**Mark Peabody**

MPeabody@kleinfelder.com  
323-896-2720

**Lisa Dickson**

LDickson@kleinfelder.com  
617-498-4652

[www.kleinfelder.com](http://www.kleinfelder.com)



# THANK YOU!





# MISSION

To achieve Los Angeles regional sustainability by leveraging successful programs and limited resources among public agencies. By working together we can set new targets, establish joint strategies, provide training, provide resources and recommend achievable environmental goals for future years.

# VISION



Our commitment to a better environment starts with the public agencies. We need to join our efforts to create a forum wherein we all work together and move towards a more sustainable Los Angeles. We recognize each of our agency's limitations, but together we can create unprecedented innovative systems, information sharing programs, and new partnerships. The Los Angeles Sustainability Coalition will be the catalyst to accelerate these initiatives for environmental construction techniques, increase in renewable energy implementation, installation of more alternative vehicle infrastructure, energy management systems, and resource conservation initiatives. Our forum will allow public agencies to freely share with one another their experiences, mentor those who are having similar challenges within their organizations, and teach one another how to use limited public resources to achieve efficient results.





# 2015 SUSTAINABILITY CONSTRUCTION FORUM

## AGENDA OVERVIEW

### MONDAY, APRIL 13, 2015

- 1:30-2:20PM - Registration
- 3:00PM - Begin Tour
- 4:45PM - Return from Tour
- 5:00PM-8:30PM - VIP Reception

### TUESDAY, APRIL 14, 2015 – 7:30AM-4:30PM

- 7:30AM-9:00AM - Registration
- 8:45AM - Introduction
- 9:00AM - 9:50AM - Session Workshops
- 9:50AM-10:00AM - Break
- 10:00AM-11:00AM - Session II
- 11:00AM-12:10PM - Session III
- 12:15PM-1:20PM - Lunch Break
- 1:30PM-3:00PM - Session IV
- 3:00PM-4:20PM - Networking/Exhibit



APRIL 13, 2015

# TOUR AGENDA



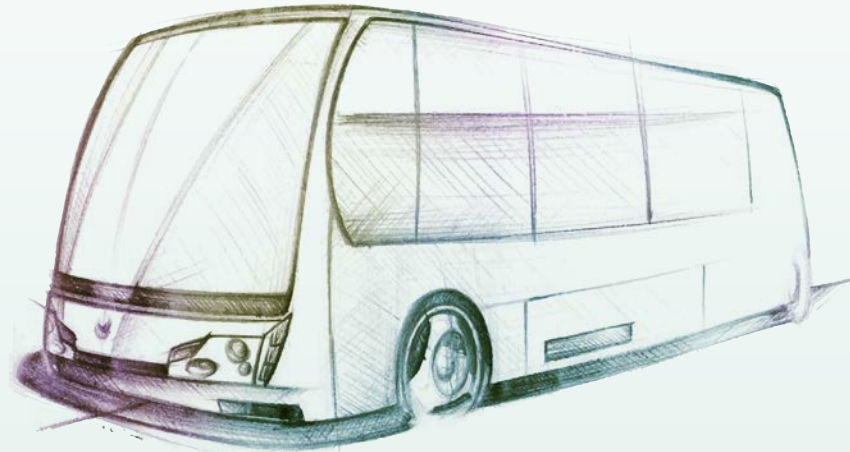
## 1:30PM - 2:20PM REGISTRATION

Check In: Metro Building  
One Gateway Plaza  
Los Angeles, CA 90012  
(Third Floor next to the Board Room)

## 3:00PM - TOURS BEGIN

Tour # 1: Proceed to Bus Pick location (Plaza Level)  
Tour # 2: Proceed to Plaza Level to go the Red line  
Tour # 3: Proceed to Bus Pick location (Plaza Level)

## 4:45PM - TOUR RETURNS



### TOUR 1 Metro's Maintenance Facility

The Los Angeles Metro Board has adopted several environmental and sustainability policies to reduce greenhouse gas emissions, increase energy efficiency and reduce its fleet dependence on fossil fuels. Join Metro staff in touring one of its maintenance facilities and understand the various sustainability challenges and solutions that have been identified to create a better working environment and achieve a more financially and environmentally sustainable operation. Information on these initiatives prior to the tour can be found at [www.metro.net/ecsd](http://www.metro.net/ecsd).

### TOUR 2 Metro's Energy Storage at Red Line McArthur Park Station

The Los Angeles Metro's Renewable Energy Policy is aimed at increasing the agency's renewable energy use by 33% by 2020. Most recent projects include an expansion of its renewable energy portfolio to include more solar panel installations, deployment of flywheel technology, exploration of waste to energy strategies, and development of proof of concept ideas. Metro staff will discuss in this tour its energy portfolio and a tour of the agency's wayside energy storage system at the Red Line McArthur Park Station.

### TOUR 3 LA Council District 9 with Councilman Curren Price

Join Los Angeles Councilman Curren Price and his staff and take a tour of opportunity areas within Los Angeles Council District 9 for potentially implementing sustainability-related projects on energy, energy efficiency, and resource and conservation management, among others. As the Los Angeles City Council Chair of the Economic Development Committee, Councilman Price supports public-private innovation partnerships especially in his Council District, which is very ripe for economic growth using purposeful and strategic sustainable strategies.



# VIP RECEPTION + AWARDS

5:00PM - 8:30PM

**5:00PM:5:50PM**

Networking and Appetizers  
Don Bell, Music & Entertainment

**6:00PM:6:15AM**

WELCOME

Acknowledgment of Metro's Board Members, Sponsors and Special VIP Guests  
Richard Katz, Master of Ceremony  
Rick Thorpe, Chief Executive Officer, Expo. Metro Line Construction Authority  
Los Angeles Councilman Curren Price  
Los Angeles Councilman Paul Krekorian

**6:15PM:6:25PM**

NATIONAL SUSTAINABILITY FUTURE DIRECTION

Carolyn Flowers, Senior Advisor to Federal Transit Administration (FTA)  
Sustainability Award Presentation to FTA

**6:25PM:6:30PM**

SUSTAINABILITY INDUSTRY EXECUTIVE OVERVIEW

**6:30PM:6:50PM**

SUSTAINABILITY AWARDS PRESENTATION

City of Los Angeles  
Port of Los Angeles  
County of Los Angeles  
Los Angeles Department of Water  
California High Speed Rail Authority  
Exposition Metro Line Construction Authority  
Los Angeles County Metropolitan Transportation Authority

**6:50PM:7:15PM**

SPECIAL SUSTAINABILITY AWARDS

Los Angeles City Councilman Curren Price  
Cris Liban, Deputy Executive Officer, Environmental, Metro

**7:15PM:8:30PM**

Continue to Network with some of the Sustainability  
Executives, Government Officials and Industry Leaders

APRIL 14, 2015

# WORKSHOP AGENDA

GREEN POWER  
WORKSHOPS

## 7:30AM - 8:30AM REGISTRATION

Metro Building

One Gateway Plaza, Los Angeles, CA 90012, (Third Floor next to the Board Room)

8:45-9:30AM

### Introductions & Welcome

Metro & Government Officials

*Richard Katz, Master of Ceremony, Richard Katz Consulting, Inc*

9:00AM-9:15AM

### National Sustainability Perspective

The Number One Financial Supporter Of Transportation Development

*Keynote Speaker: Carolyn Flowers, Senior Advisor to the Federal Transit Administration*

9:15AM-9:30AM

### A Vision for A Sustainable Los Angeles

One City With Many Sustainability Goals.

*Matt Peterson, Chief Sustainability Officer, City of Los Angeles*

9:30AM-9:35AM

### Purpose + Need for Sustainability Forum

Public Agencies have maximum impact on the Los Angeles Environment. What Direction Are They Going?

*Dr. Sherman Gay, Public Connections*

9:35AM-9:50AM

### Metro's New Sustainability Programs

Metro has implemented one of the most comprehensive Sustainability Program in Nation.

*Cris Liban, Deputy Executive Officer Environment, Metro*

9:55AM-9:45AM

### Session Break

10:00AM: 11:00AM

### A Sustainable Gateway to Los Angeles

Going Green in LA is Easier Than You think.

*Moderator: Andre Martecchini, Principal Engineer, Kleinfelder; Michelle Boehm, Southern California Regional Director, California High Speed Rail Authority; Jacob Williams, Assistant Director, County Of Los Angeles Public Works; Douglas J. Sereno, Program Management, Director, Port Of Long Beach; Steve Bassett, Supply Chain Services LA. Department of Water & Power*

11:00AM:12:10PM

### Sustainability in Construction: When Does it Make Sense?

What are the impacts on Los Angeles, Contractors, Manufactures and Agencies.

*Moderator: Sean P. Vargas, Director-Special Projects VS2 Consulting; David Carlson, V. P. Sustainable Development, Parsons; Anthony Kirby, Associate Principal, Arup; Fulya Kocak, Director of Sustainability, Clark Construction; Clark Peterson, EH&S Director of Western Region, Skanska*

12:15PM:1:20PM

### Lunch and Networking

1:30PM:2:55PM

### Implementing Sustainability Strategies

Why are the public agencies increasing their usage of Public Private Partnerships to accelerate their transit developments.

*Moderator: Lan Saadatnejadi, LRS Program Delivery; Rodrick Diaz, Interim Chief Planning & Project Delivery Officer, Metrolink; Roger Moliere, Senior Advisor, Land Use, Energy, & Natural Resources, Manatt, Phelps & Phillips; Mark Linsenmayer, P3 Director, Metro; Praful Kulkarni, CEO of gkkworks & Board Chair LACEDC*

2:55PM:3:00PM

### Closing Remarks

3:00PM:4:30PM

### Networking & Visit Exhibit Area





# THE NEW 9<sup>th</sup>

COUNCILMEMBER  
CURREN D. PRICE, JR.

April 14, 2015

Dear Friends,

On behalf of the City of Los Angeles and the “New Ninth” Council District, welcome to the **Los Angeles Sustainability Coalition’s “2015 Sustainability Construction Forum”!**

The Los Angeles Sustainability Coalition and METRO have gathered multiple public agencies to learn about the new sustainability policies, available technologies, new projects and opportunities, and billions available in public agency procurement.



I encourage all of you to take advantage of opportunities presented today and follow up with connections you make while networking. By working together we can set new targets, establish joint strategies, provide training, resources and recommend achievable goals for future years.

Best wishes on a successful conference!

Sincerely,

**CURREN D. PRICE**  
Councilmember, 9<sup>th</sup> District

District Office • 4301 S. Central Ave • Los Angeles, CA 90011 • (323) 846-2651  
City Hall • 200 North Spring Street • Suite 420 • Los Angeles, CA 90012 • (213) 473-7009

**JUDY CHU, Ph.D.**  
27TH DISTRICT, CALIFORNIA

**COMMITTEE ON  
THE JUDICIARY**  
SUBCOMMITTEE ON  
CRIME, TERRORISM, HOMELAND SECURITY  
AND INVESTIGATIONS

SUBCOMMITTEE ON  
COURTS, INTELLECTUAL PROPERTY  
AND THE INTERNET

**COMMITTEE ON  
SMALL BUSINESS**  
RANKING MEMBER, SUBCOMMITTEE ON  
ECONOMIC GROWTH, TAX AND CAPITAL ACCESS  
SUBCOMMITTEE ON  
CONTRACTING AND WORKFORCE



**Congress of the United States**  
**House of Representatives**  
**Washington, DC 20515**

**WASHINGTON OFFICE:**

2423 Rayburn House Office Building  
Washington, DC 20515  
(202) 225-5464  
(202) 225-5467 (Fax)

**PASADENA DISTRICT OFFICE:**

527 South Lake Avenue, Suite 106  
Pasadena, CA 91101  
(626) 304-0110

April 13, 2015

Los Angeles Sustainability Coalition  
Metro Headquarters Building, Third Floor  
One Gateway Plaza  
Los Angeles, CA 90012



Dear Friends,

It is with great pleasure and enthusiasm that I congratulate the Los Angeles Sustainability Coalition here at the Metro Headquarters Building in Downtown Los Angeles for hosting the Construction Sustainability Forum.

The Los Angeles Sustainability Coalition was founded with the mission to help Los Angeles achieve environmental sustainability through encouraging collaboration efforts and creating joint strategies with public agencies. Its work in promoting best practices between agencies is immensely important to the livelihood of the people of Los Angeles County.

I commend the Los Angeles Sustainability Coalition for its commitment to creating a forum for public agencies to share challenges and solutions with one another. This approach to facilitate an exchange of ideas is vitally important in helping to solve our region's pressing environmental issues.

On behalf of the United States House of Representatives and the people of the 27<sup>th</sup> Congressional District, I offer my congratulations and best wishes for the continued success of the Los Angeles Sustainability Coalition!

Sincerely,

**JUDY CHU, Ph.D.**  
Member of Congress, 27<sup>th</sup> District





**ERIC GARCETTI**  
MAYOR

April 14, 2015

Dear Friends,

On behalf of the City of Los Angeles, welcome to the Los Angeles Sustainability Construction Forum.

Since its inception, The Los Angeles Sustainability Coalition has enhanced Los Angeles' regional sustainability by providing opportunities for public agencies to discuss strategies and recommendations for achievable environmental goals. The Forum provides an excellent opportunity for public agencies and construction industry leaders to interact, address issues, and identify solutions to ensure the seamless implementation of sustainability strategies in our region.

I extend my congratulations to honorees Councilman Curren Price, Carolyn Flowers, and Cris Liban for their achievements. I appreciate their investment in Los Angeles.

I send my best wishes for a memorable evening and continued success.

Sincerely,

A handwritten signature in dark ink, appearing to read "E. Garcetti".

**ERIC GARCETTI**  
Mayor





Crenshaw Transit Corridor  
Los Angeles, CA  
©HNTB

## Sustainability in infrastructure

Arup is the creative force at the heart of many of the world's most prominent projects. Our 11,000 planners, designers, engineers and consultants deliver innovative projects across the world with creativity and passion.

With broad practical experience on infrastructure projects of all sizes and levels of complexity, our strength is rooted in our multidisciplinary approach, technical acumen and our longstanding focus on sustainable development.

We believe in creating assets which deliver long lasting value to the surrounding communities.

We shape a better world.





# Welcome

## Phil Washington Metro's New Chief Executive Officer

Phillip A. Washington was unanimously selected as RTD's General Manager in December 2009 by RTD's Board of Directors.

Phil had served as the interim General Manager for six months, and prior to that was RTD's Assistant General Manager (AGM) of Administration for nearly ten years. As RTD's General Manager, Phil and his team was leading one of the most dynamic transit agencies in North America, which is currently implementing the FasTracks program, one of the largest transit expansion programs in the country.

In a relatively short period of time, and with the recent groundbreaking of the commuter rail line from Denver International Airport to downtown Denver, Phil has spearheaded the implementation of the first-of-its kind \$2.2 billion dollar transit Public Private Partnership (P3). The Eagle P3

Project is nearly complete and is on track to beat or meet the scheduled completion date of 2016.

Phil has worked to reach agreement on two major railroad deals that has paved the way for the build out of two commuter rail lines. Phil is responsible for a 2013 total agency budget appropriation in the amount of \$2.7 billion dollars and is currently managing active transit expansion projects in the amount of \$4.7 billion.

In 2011 RTD also executed the largest one-time Full Funding Grant Agreement (FFGA) (\$1.03 billion) in its history. Phil also created the RTD & Community Workforce Initiative Now (WIN) Program that identifies, assesses, trains, and puts to work thousands of people who live in urban communities affected by major infrastructure projects.



## **RICHARD D. THORPE, P.E.**

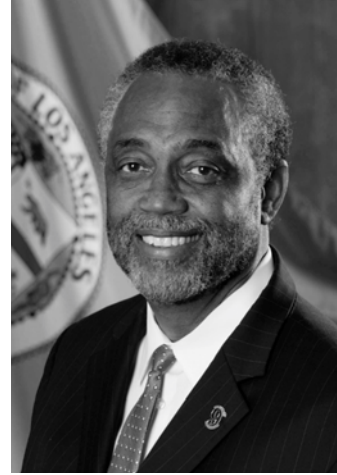
Chief Executive Officer, Exposition Metro Line Construction Authority

Rick is currently the Chief Executive Officer of the Exposition Metro Line Construction Authority. With more than 35 years of design and construction experience, Rick is well known in the transit industry for his successful work on the San Diego, Salt Lake City and Los Angeles transit systems.

As the Construction Authority, Rick is responsible for directing the agencies' implementation of the 16-mile, \$2.5 billion Exposition Light Rail Line from downtown Los Angeles to Santa Monica.

Rick's other roles in the development of the Los Angeles County transit system include overseeing the design and construction of the Pasadena Light Rail Line, the San Fernando Valley Orange Line Busway, and the Eastside Light Rail Line.

Rick's work in Salt Lake City included serving as the Program Manager for their light rail system. As such, he was responsible for overseeing the design and construction of the initial light rail line which was delivered under budget and well ahead of schedule for the 2002 Winter Olympic Games.



## **COUNCILMAN CURREN D. PRICE, JR.**

Los Angeles City Councilmember, 9th District

On July 1, 2013 Councilman Curren D. Price Jr. became the 17th person elected to the Los Angeles City Council representing the 9th Council District.

The boundaries of the New 9th consist of L.A. Live on the North, Normandie Ave on the West, 95th street on the South and Alameda on the East. The district includes Staples Center, L.A. Mart, USC, Orthopaedic Institute for Children, the Coliseum, and Exposition Park with its world-class museums, sport facilities, recreational areas, Science Center and the Rose Garden.

His primary focus for the 9th is improving the quality of life for all residents in the district. This includes community beautification, safety, economic development, and youth empowerment. On the City Council he chairs the Economic Development Committee, and also serves on Housing, Public Works, the Arts and Parks Committees.

His previous public experience includes service in the California Legislature representing the state's 26th Senate District and representing the 51st Assembly District.





## **RICHARD KATZ**

Master of Ceremony

For 10 years, Richard Katz served as Chair of the powerful Assembly Transportation Committee authoring Proposition 111, a 10 year Transportation Blueprint which raised more money for mass transit and highways than any other effort in California history. He created the Congestion Management Plan, requiring cities and counties to measure and mitigate impacts of land use decisions on their streets, highways and transit systems.

In June of 2005, Los Angeles Mayor Antonio Villaraigosa appointed Katz to serve with him on the Governing Board of the Metropolitan Transportation Authority, where Katz served for 8 years. In 2008, the Mayor appointed Katz to the Metrolink Board, where he continues to serve, after the horrendous Chatsworth accident, "to make sure this never happens again." When Mayor Garcetti was elected in 2013, he appointed Richard Katz to the Los Angeles City Planning Commission, where he continues to serve.

Richard Katz is the owner of a successful public policy/ government relations firm, Richard Katz Consulting (RKC), Inc. He serves on the Management Committee and Board of the Valley Economic Alliance and the Boards of Heal the Bay and Valley Presbyterian Hospital.



# THANK YOU!

Speakers  
Sponsors  
Supporters  
Guests  
Attendees  
and  
LA Metro



A portrait of Carolyn Flowers, a woman with short dark hair, smiling. She is wearing a dark blazer and a multi-strand pearl necklace. The background is a city skyline at dusk.

## National Sustainability Perspective

The Number One Financial  
Supporter Of Transportation  
Development

**KEYNOTE SPEAKER**

CAROLYN FLOWERS

Senior Advisor, Federal Transit Administration





# Carolyn A. Flowers

## Senior Advisor, Federal Transit Administration

Prior to joining the FTA, she was Chief Executive Officer/Director of Public Transit for Charlotte Area Transit System (CATS), where she was responsible for county-wide bus and rail transit planning and management. CATS has a \$278 million budget and serves more than 80,000 passengers daily. Flowers worked with the Metropolitan Transit Commission, Mecklenburg County, incorporated towns, and City business units.

Prior to joining the City of Charlotte in 2009, Flowers was Chief Operations Officer for Los Angeles County Metropolitan Transportation Authority (MTA) and responsible for managing bus operations and Freeway Service Patrol.

Flowers served as co-chair of the American Public Transportation Association's (APTA) Reauthorization Task Force and Vice-Chair of Leadership APTA Committee. She was also a member of APTA's Publication Advisory, Leadership, Legislative, and Awards committees. She served on the Board of Directors for the North American Transit Services

Association (NATSA) and the Transit Cooperative Research Program (TCRP) Oversight and Project Selection. She is a member of the National Forum of Black Public Administrators and Women's Transportation Seminar.

In 2007, the UCLA Black Alumni Association recognized her as the Tom Bradley Alumnus of the Year. The award is named for the first African-American Mayor of Los Angeles, a champion of public transportation for Los Angeles County. In 2008, the Los Angeles Chapter of the Women's Transportation Seminar named her Woman of the Year. She also received the Ambassador award for her volunteer work with the American Stroke Association and was given a special recognition award by the Greater Los Angeles African-American Chamber of Commerce. In March, 2015 she was recognized by COMTO as awardee for Women Who Move the Nation and by the Charlotte Club Of The National Association of Negro Business and Professional Women's Clubs for their Women's History Hall of Fame Award.



## MATT PETERSEN

Chief Sustainability Officer,  
City of Los Angeles

Before joining the Mayor's office, Matt served as President and CEO of Global Green USA for 19 years. Passionate about improving the lives of those in need, combating climate change and greening communities, Petersen focused the organization on greening affordable housing, schools and cities (including LA). Petersen led the organization in the green rebuilding of New Orleans after Hurricane Katrina, and later to communities devastated by Hurricane Sandy. Matt is a board member of Global Green USA and Habitat for Humanity of Greater Los Angeles, as well as is a member of the Council on Foreign Relations and an advisor to the Clinton Global Initiative.



## DR. SHERMAN GAY

Public Connections,  
Event Chairman

Dr. Sherman Gay has over 23 years of solid experience in the public sector. He served as the Business Outreach Officer for Los Angeles Metro, the third largest transit agency in the United States. His plans are to continue to assist Public Agencies, Prime Contractors and small businesses (SBE/MBE/WBE)

Sherman served five years as Metro's Business Outreach Officer and developed the overall plans and approaches for increasing business participation in all aspects of Metro contracting. He also developed and designed the monthly *How to do Business with Metro Workshop* to provide training, procurement forecast, exposure to Metro's Executives, and detailed insight into Metro's policies and procedures.

In May of 2012, Sherman was recognized by the Black EOE Journal as the "Best of the Best 2012 Top Supplier Diversity Executive."



## CRIS LIBAN

Deputy Executive Officer,  
Environmental, Metro

Cris B. Liban is LA Metro's Deputy Executive Officer of the Environment overseeing their Environmental, Sustainability, and Energy initiatives. These programs are internationally recognized including most recently with the American Public Transportation Association's (APTA) Sustainability Commitment Platinum Recognition; and ISO 14001 certification of Metro's agency-wide Environmental Management System.

He currently co-chairs APTA's Sustainability Commitment Sub-Committee, is a member of the APTA Climate Change Working Group, and is a co-chair of the APTA Sustainability Metrics Working Group, and chairs two National Academies' Transportation Cooperative Research Program (TCRP) studies related to Climate Change Impacts to transit.







## DOUGLAS J. SERENO

Project Manager, Director,  
Port Of Long Beach

Doug Sereno joined the Port in 2002 as Deputy Chief Harbor Engineer, in charge of overseeing program management, and was appointed to head the newly-formed Program Management Division in August 2007.

Doug oversees the Port's 10-year, \$4.5 billion capital development program and oversees the \$1.314B Middle Harbor Redevelopment Program, the Pier G Redevelopment Program, the Portwide Off-Dock Rail Upgrade Program, the Fire and Safety Program and the Port's "big ship ready" Dredging Program.

Doug is the Chair of ASCE's Committee on Sustainability which is charged with implementing the Society's strategic sustainability initiative. He is an active member of ASCE's Coasts, Oceans, Ports and Rivers Institute (COPRI), CMAA, WEF and the US Green Building Council.



## MICHELLE BOEHM

Southern California Regional  
Director, California High Speed  
Rail Authority

Boehm brings nearly 20 years of experience in transportation planning and policy analysis. She was appointed by Governor Edmund G. Brown, Jr. in 2012, in her role with the Authority, she chairs a regional transportation CEO group focused on High-Speed Rail issues and participates in the Regional Rail Partner's Working Group which focuses on passenger rail planning in California.

Recent planning documents of note Boehm collaborated on are the I-15 Corridor System Master Plan and several Conceptual Study Reports for the San Pedro Waterfront, the I-710 Corridor, and Alameda Corridor East.

She is a founding member and former advisory board member for Mobility 21, and serves as a Director-at-Large on the Board of the Women's Transportation Seminar, and as an Ex-Officio Board Member on the LOSSAN Rail Corridor Agency Board of Directors.



## JACOB WILLIAMS

Assistant Director, County Of  
Los Angeles Public Works

Jacob Williams serves the largest public works agency in the nation, with more than 10 million people across 4,000 square miles, an annual operating budget of \$2.3 billion and a workforce of almost 4,000 employees. He is responsible for the management and delivery of the County's Capital Projects Program currently valued in excess of \$3 billion. Jacob has led the County of Los Angeles in a paradigm shift from traditional low-bid delivery to more advanced and integrated project delivery methods, such as Design Build.

Jacob is the past President of the Design Build Institute of America (DBIA) Western Pacific Region, covering California, Nevada, Arizona, and Hawaii and is a member of the DBIA National Board.



# REVOLUTION

## PEST SOLUTIONS

Commercial and Residential Services

### SPECIALIZED PEST CONTROL:

**Termite Control**

**Rodent Control**

**Bee Service**

**Specialty Services :** Bed Bugs, Birds, Gophers & Ground Squirrel Control.

### SPECIALIZED INDUSTRY SERVICES:

- Multi-Unit Complex
- School and Universities
- Warehouse & Distributions
- Government
- Food Service
- Healthcare
- Hospitality
- Retail
- ...and MORE

A MILITARY FRIENDLY & VETERAN OWNED COMPANY | CERTIFICATIONS: **MBE • DBE • SBE**

✓ LICENSED

✓ BONDED

✓ INSURED

**FREE**

Inspections &  
Pest Evaluations

**CONTACT US NOW!**

(888) 600-3614 | (424) 321-6061

[www.REVOLUTIONPESTSOLUTIONS.COM](http://www.REVOLUTIONPESTSOLUTIONS.COM)

PROUD SPONSOR OF:

**Veterans Advocacy  
Group of America**

[www.vaga.us](http://www.vaga.us)



WE SUPPORT THE  
**2015 SUSTAINABILITY CONSTRUCTION FORUM**  
APRIL 13-14, 2015  
CALL 323-299-4647

Town Car



Mercedes Sprinter



Lincoln MKX



For the prom or other special occasion.

Stretch Limo



15 Passenger Van



Excursion



[info@www.wingslimoservice.com](mailto:info@www.wingslimoservice.com)

CONTACT US FOR CORPORATE CONTRACT DISCOUNTS,  
WEDDINGS, EVENTS, AND ALL YOUR TRANSPORTATION SERVICES.

CALL: 323-299-4647 [WWW.WINGSLIMOUSINE.COM](http://WWW.WINGSLIMOUSINE.COM)



MENTION THIS AD  
AND RECEIVE 10% OFF





**ANDRE  
MARTECCHINI, P.E.**  
Principal Engineer Kleinfelder

Andre is a Principal Engineer with Kleinfelder, Inc., a national engineering consulting company, in the Cambridge, MA office. He has over 35 years of civil and structural engineering experience with the design and construction of public infrastructure, including, highways, transit facilities, ports and terminals.

He has also concentrated on climate change projects with an emphasis on vulnerability assessment and developing and implementing adaptation strategies to counter the effects climate change.

He received his BS and Masters of Engineering degrees from Cornell University. He has served as project manager for a number of climate change vulnerability assessments in various municipalities and large public agencies.



**STEVE BASSETT**  
Supply Chain Services, Los Angeles Department Water & Power

Steven Bassett is a Supply Services Manager with the Los Angeles Department of Water & Power. Steven has been with LADWP for 29 years servicing customer procurement needs in both the warehousing and purchasing environments. Steven manages strategic sourcing which falls directly in line with Environmentally Preferable Products.

Steven, alongside the Environmental Affairs office, is coordinating the implementation of an EPP policy by facilitating communications between other city agencies, end users, and the vendor community to begin incorporating EPP products into the procurement stream.



**SEAN P. VARGAS,  
P.E., LEED AP**  
Director-Special Projects VS2 Consulting

Mr. Vargas is the Director of Special Projects for VS2 Consulting Inc. Headquartered in Los Angeles, California, he directs complex infrastructure projects and public development programs with sustainability as a core focus. His recent experience includes the role of Sustainability Manager for the Crenshaw/LAX Transit Project and delivery of award-winning projects under the City of Los Angeles Proposition O \$500 Million storm water-quality bond measure – including the South Los Angeles Wetland Park.

Mr. Vargas is a licensed Civil engineer in California and Florida; and is also an Envision credentialed and LEED Accredited Professional. He is an Institute for Sustainable Infrastructure (ISI) Trainer and Verifier.



## DAVID CARLSON

V. P. Director of Sustainable Development, Parsons

David J. Carlson CSR-P, focuses on the oversight, tracking, and growth of key sustainability and climate resiliency service offerings to government transportation agencies and private transportation providers and the enhancement of Parson's Transportation Group (PTG) internal sustainability program.

David created and developed the Parsons Dynamically Green Transportation program, which highlights the connections between mobility, ecology, and community.

Prior to joining Parsons, Mr. Carlson served as a senior environmental protection specialist for the Federal Highway Administration, directed the Context Sensitive Solutions National Dialog and was the Program Manager for the sustainable highways evaluation system called INVEST, and is an author of the federal Sustainable Site recommendations to the White House.



## ANTHONY KIRBY, P.E., CENG

Associate Principal, Arup

Anthony is responsible for 15 technical staff delivering projects in the aviation, healthcare, master-planning and commercial buildings sectors. Tony is the Lead Civil Engineer for the \$438M LAX Central Utility Plant Replacement Project (LAX CUP) and has been involved in the project from Bid to substantial completion.

He is currently the Utilities Planner for Los Angeles World Airports (LAWA), part time through Arup, and responsible for managing all input to develop a Utilities Infrastructure Plan for the LAX campus and coordinating LAWA utility relocation works for the \$1.4Bn Crenshaw Corridor rail project under construction for MTA.

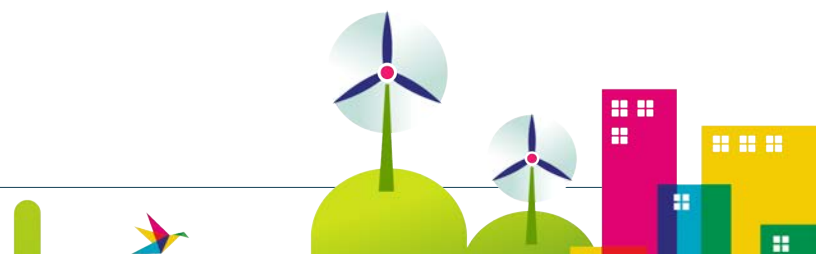


## FULYA KOCAC, LEED FELLOW

Director of Sustainability, Clark Construction

Fulya Kocak develops the company's sustainability strategy, coordinates environmental responsibility efforts, and represents the company on numerous sustainable and green committees. In addition, Fulya manages Clark's nationwide Sustainability Committee which develops continuing education curriculum for employees.

Fulya is the recipient of 2014 Mayor's Sustainability Award for the District of Columbia. Fulya has been named a 2014 LEED Fellow by the U.S. Green Building Council (USGBC). Fulya served as the Chairwoman for the USGBC National Capital Region Chapter. As a voting member of the DCRA Green Technical Advisory Group, she has been influential in developing the District of Columbia's first green building codes.







## CLARK PETERSON, CHST, CMSP

EH&S Director of Western  
Region, Skanska

Clark Peterson manages the environmental, health, and safety department for Skanska USA Civil's Western Region including the Rocky Mountain, California, and Northwest operations.

Clark has 20 years of experience managing safety on very diverse and technical civil construction projects. Clark has managed Safety on rural and urban heavy highway transportation projects in all of the states in the western United States.



## ROGER MOLIERE

Senior Advisor, Land Use,  
Energy, & Natural Resources,  
Manatt, Phelps & Phillips

Roger Moliere's practice focuses on the public-private development of various mixed-use and commercial projects, public-private partnerships ("P3"s), and engaging the private sector for design, financing, construction, operation and maintenance of transit, highway and infrastructure projects.

Prior to joining the firm, Mr. Moliere worked for the Los Angeles Metro, where he was responsible for the development and construction of more than 30 mixed-use, hotel and commercial projects.

Mr. Moliere also served as Deputy Director of Development for the County of Los Angeles Department of Beaches and Harbors for more than nine years, where he led negotiations for the second-generation development of County-owned Marina del Rey.



## LAN SAADATNEJADI

LRS Program Delivery

Lan Saadatnejadi has more than 20 years of experience in delivering transportation improvement programs and projects and has worked in both public and private sectors. She has comprehensive knowledge of federal, state, regional, and local transportation programs, including high occupancy toll (HOT) lanes, toll roads, high occupancy vehicle (HOV) lanes, freeway widening, new freeways, interchanges, multi-purpose corridors, operational improvements, etc.

Lan's most recent experience was building a brand new team and developing a \$20 billion Measure R Highway Program at the Los Angeles Metropolitan Transportation Authority. She earned her B.S. of Civil Engineering degree from UCLA and an MBA from Cal State Long Beach. Currently she is an independent consultant specializing in Public Private Partnership and Program Building.



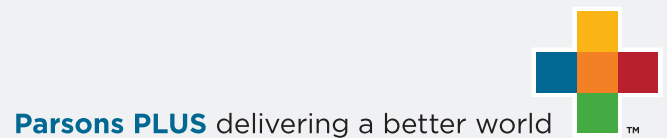


## Proudly Supports the 2015 Sustainability Construction Forum

*Green Power: accelerate your sustainability*



[www.parsons.com](http://www.parsons.com)



Bringing new opportunities to Los Angeles with the Expo Phase 2, Regional Connector, Westside Subway Extension, and the Sixth Street Viaduct Replacement Projects.

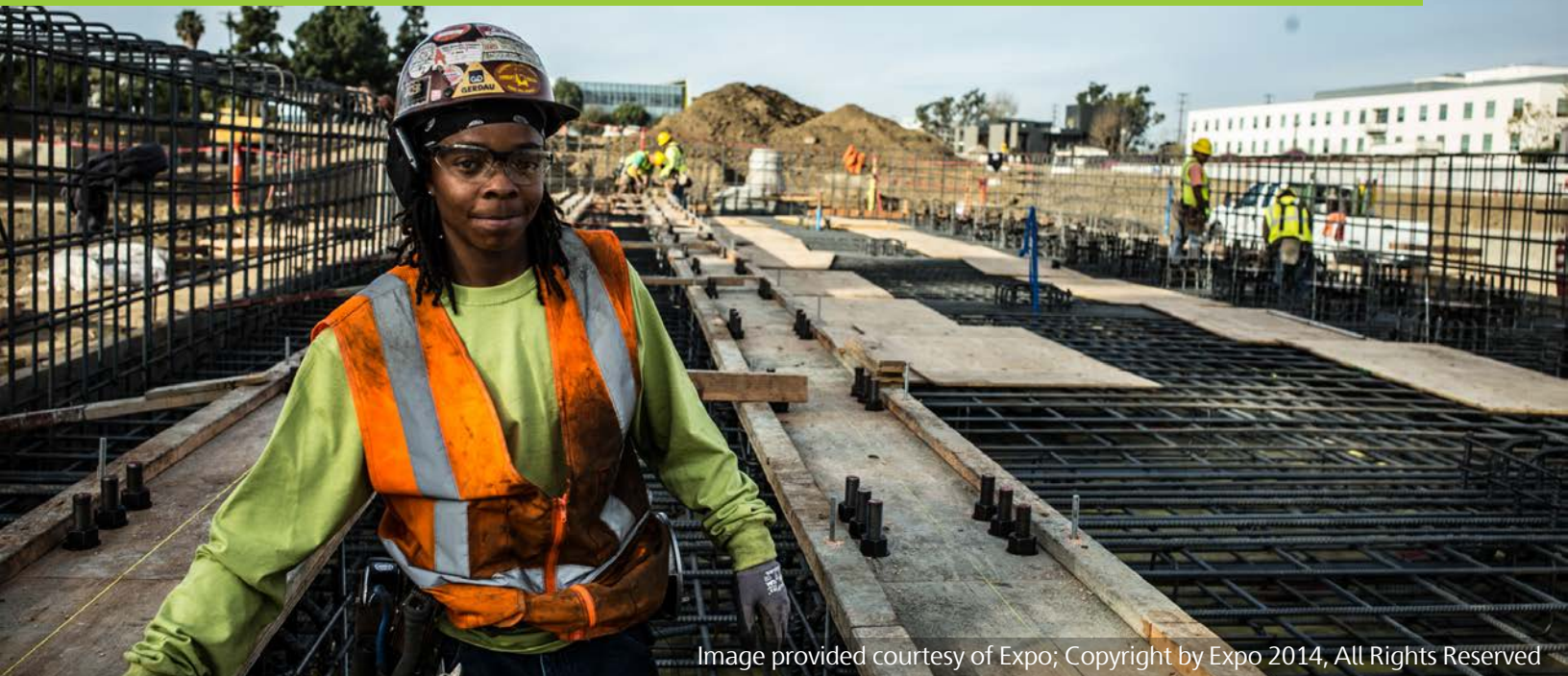


Image provided courtesy of Expo; Copyright by Expo 2014, All Rights Reserved

LOS ANGELES SUSTAINABILITY COALITION



[usa.skanska.com](http://usa.skanska.com)

CA licenses 817578 & 140069





## **MARK LINSENMAYER**

P3 Director, LA Metro

Mark Linsenmayer is responsible for supporting transportation planning, programming, P3 initiatives, and strategic long range financial forecasting for the regional transportation system in Los Angeles County. His focus has been identifying solutions to diminishing State and Federal transportation funds.

Mark Linsenmayer possesses a Master of Urban and Regional Planning from the University of California, Irvine; a Master of Public Administration degree from the University of Colorado; and a Bachelor of Arts Degree in Political Science from the University of Washington. Prior to joining Metro he worked as a management consultant and financial advisor for various engineering and infrastructure investment firms.



## **PRAFUL M. KULKARNI**

CEO, gkkworks

Praful is the CEO of a leading integrated firm that provides architectural and construction services based in the United States and India.

In 2011, under Praful's leadership, gkkworks was recognized as one of the fastest growing privately held companies in America by Inc. Magazine. Praful received the Ernst & Young *Entrepreneur of the Year* Award for his excellence and success in innovation, financial performance, and personal commitment to his business, clients, and the communities they serve.

He is a Fellow of the Rockefeller Foundation, an active member of the DBIA and past president of the DBIA Western Pacific Region, and serves as a board member with the Los Angeles Economic Development Agency, the Community College Facilities Coalition, the Pepperdine University Board of Visitors, and the Indian Institute of Technology Foundation.



## **RODERICK DIAZ**

Interim Chief Planning & Project Delivery Officer, Metrolink

Roderick Diaz brings more than 20 years of professional experience from multimodal transportation operations to research and policy analysis for the transportation industry. Major project focuses include regional rail development, bus rapid transit systems and bus operations planning, performance measurement, transit-supportive land development, and intermodal passenger and freight transportation.

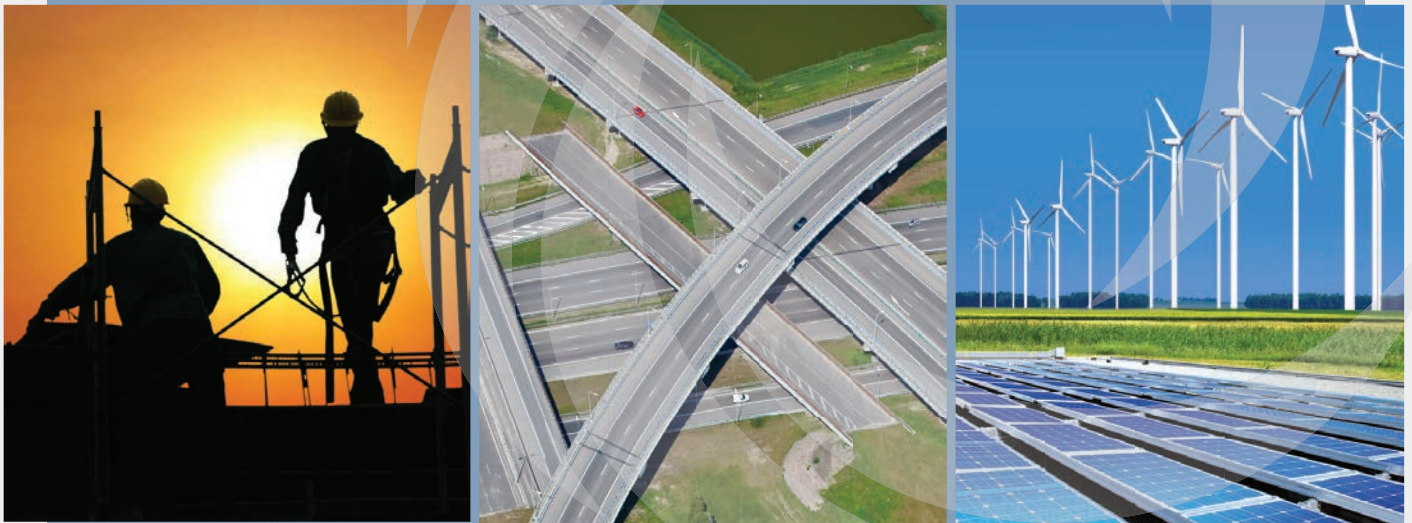
Roderick has served as Chair of the Transportation Research Board Transit Management and Performance Committee since 2008, lead author of FTA's Characteristics of Bus Rapid Transit for Decision-Making and served as the panel moderator for Transportation Research Board Annual Meeting (2004 through 2013). He has more than eleven published papers and spoke at more than 20 conference presentations.

# Create. Enhance. Sustain





## TRC is a Proud Sponsor of the Los Angeles Sustainability Coalition + LA Metro 2015 Sustainability Construction Forum



At TRC, sustainability is a fundamental principle that drives our business. We are committed to helping clients define and implement management strategies that create measurable improvements in business and sustainability performance, from strategy definition through deployment and operations. Our project teams are experts in designing solutions to meet our client's toughest business challenges, including:

**Prevention | Water Conservation and Recycling | Management Systems  
Development | Climate Change Adaptation | Vulnerability Assessment  
Sustainability Advisory Services | Carbon Strategies | Eco-Efficiency Renewable  
Energy | Energy Efficiency | Ecosystems and Natural Capital Sustainable  
Remediation | Sustainable Infrastructure**

To find out more about how TRC can help you meet your sustainability objectives, please visit our website or contact one of our sustainability consultants in Los Angeles

# Public Agencies Directory

## **AGC of California**

John Hakel  
1906 W. Garvey Avenue South,  
Suite 100  
West Covina, CA 91790  
626-608-5800  
hakelj@agc-ca.org

## **California Department of Corrections & Rehabilitation**

Nina Martinez  
9838 Old Placerville Road, Suite B-2  
Sacramento, CA 95827  
916-255-6134  
Nina.martinez@cdcr.ca.gov

Christopher DiPlacito  
916-255-6134  
Christopher.diplacito@cdcr.ca.gov

## **California Department of Water Resources**

Christopher Meyers  
1416 9th Street  
Sacramento, CA 95814  
916-653-5490  
Christopher.meyers@water.ca.gov

## **California Department of General Services, Procurement Division**

Danetta Jackson  
707 3rd Street, 2nd Floor  
West Sacramento, CA 95605  
916-375-4483  
Dannetta.Jackson@dgs.ca.gov

Katy Kinman  
916-376-1844  
Kathy.kinman@dgs.ca.gov

Jamie Tovar  
916-376-1844  
Jamie.tovar@dgs.ca.us

## **California Department of General Services Real Estate Services Division**

Yolanda Hazewood  
707 3rd Street, 4th floor  
West Sacramento, CA 95605  
916-375-4246  
Yolanda.hazewood@dgs.ca.gov

## **California Disabled Veteran Business Alliance**

Rich Dryden  
4201 Sierra Point Drive Suite 101  
916-446-3510  
Rich.dryden@cadvbe.org

## **California High Speed Rail Authority**

Patricia Padilla  
770 L Street Suite 800  
Sacramento, CA 95814  
916-324-1541  
info@hrs.ca.gov  
714-973-1335  
ppadilla@padillainc.com

Valerie Martinez  
Valerie.martinez@hsr.ca.gov

## **California Public Utilities Commission**

Drisha Melton  
505 Van Ness Avenue  
San Francisco, CA 94102  
415-703-2782  
Drisha.melton@cpuc.ca.gov

Sandy Windbigler  
415-703-2782  
Sandy.windbigler@cpuc.ca.gov

**Caltrans District 7**

District Director- Carrie Bowen  
100 S. Main Street  
Los Angeles, CA 90012  
213-897-3656  
Carrie.bowen@dot.ca.gov

**Caltrans District 11**

Cyndee McGowan  
4050 Taylor Street  
San Diego, CA 92110  
619-220-7343  
Cyndee.mcgowan@dot.ca.gov

Michelle Gongora  
619-220-7343  
Michelle.gongora@dot.ca.gov

Andy Yu  
949-724-2021  
Andy.yu@dot.ca.gov

**City of Long Beach, Financial Management**

Patrice Martin  
333 W. Ocean Blvd. 7th Floor  
Long Beach, CA 90802  
562-570-6037  
Patrice.martin@longbeach.gov

**City of Long Beach, Water Department**

Efren Avalos  
1800 E. Wardlow Road  
Long Beach, CA 90807  
562-570-2406  
Efren.avalos@lbwater.org

**City of Los Angeles**

Angela Babcock  
Office of Los Angeles  
Mayor Eric Garcetti  
200 N. Spring street Suite 13th Floor  
Los Angeles, CA 90012  
213-978-0781  
Angela.babcock@lacity.org

**Department of Veterans Affairs/ CALVET**

John Anderson  
1227 O Street  
Sacramento, CA 95814  
916-657-9354  
John.anderson@calvet.ca.gov

**General Services Administration**

Pamela Smith-Cressel  
300 N. Los Angeles Street  
Los Angeles, CA 90012  
213-894-3210  
Pam.smith-cressel@gsa.gov

**Los Angeles City Council District 9 Small Business Resource Center**

Dorothy Randle  
4301 S. Central Avenue  
Los Angeles, CA 90011  
323-846-2651  
CD9BRC@lacity.org  
Dorothy.randle@lacity.org

**Los Angeles County Department of Public Works**

Jacob Williams  
900 S. Fremont Avenue  
Alhambra, CA 91803  
626-458-4014  
jwilliams@dpw.lacounty.gov

**Los Angeles County Internal Services Department**

Debbie Cabreira-Johnson  
1100 North Eastern Avenue,  
Los Angeles. CA 90063  
323-264-7135  
Dcabreira-johnson@dcba.lacounty.gov

**Los Angeles County Metropolitan Transportation Authority (METRO)**

Brain Boudreau  
One Gateway – Plaza  
Los Angeles, CA 90012  
213-922-2474  
boudreau@metro.net  
www.metro.net

Stephanie Wiggins  
213-922-1023  
wiggins@metro.net

**Los Angeles Department of Water & Power**

Simon Zewdu  
111 N. Los Angeles Street  
Los Angeles, CA 90012  
213-367-4211  
www.ladwp.com

**Los Angeles Unified School**

# Public Agencies Directory

## **District**

Kimberly Frelow  
333 S. Beaudry Avenue, 21st Floor  
Los Angeles, CA 90017  
213-241-4973  
Kimberly.frelow@lausd.net

## **Los Angeles World Airports**

Rose Cote  
6053 West Century Boulevard  
Suite 300  
Los Angeles, CA 90045  
424-626-7303  
rcote@lawa.org

## **Metropolitan Water District**

John Arena  
700 North Alameda Street  
Los Angeles, CA 90012  
213-217-5519  
jarena@mwdh2o.com

## **Office of Federal Contract Compliance Programs**

Carolyn Menchyk  
1640 S. Sepulveda Boulevard  
Suite 440  
Los Angeles, CA 90025  
310-268-1790  
Mcham-menchyk.carolyn@dol.gov

Aliyah Levin  
310-268-1790  
Levin.aliya@dol.gov

## **Orange County Transportation Authority**

Bekele Demissie  
550 S. Main Street  
Orange, CA 92863  
714-560-5657

## **Port of Los Angeles**

Tracia Carey  
925 Harbor Plaza  
Long Beach, CA 90802  
310-732-7656  
tcarey@portla.org

## **Southern California Association of Government**

Leyton Morgan  
818 W 7th Street, 12th Floor  
Los Angeles, CA 90017  
213-236-1982  
morganl@scag.ca.gov

## **Southern California Edison Company**

Eric Fisher  
2244 Walnut Grove  
Rosemead, CA 91770  
626-614-6430  
eric.fisher@sce.com

## **Southern California Gas Company**

Joe Chow  
555 W. 5th Street  
Los Angeles, CA 90051  
323-918-1897  
jchow@semprautilities.com

## **Southern California Regional Rail Authority – Metrolink**

One Gateway Plaza, 12th Floor  
Los Angeles, CA 90012  
213-452-0200  
www.metrolinktrains.com

## **U.S. DOT Small Business**

### **Transportation Resource Center**

Scott Leslie  
2012 H Street Suite 101  
Sacramento, CA 95811  
916-443-5957  
sleslie@calaslancc.org

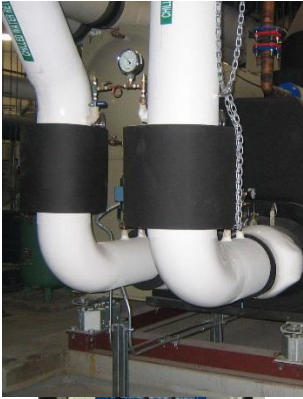
Scott Leslie  
916-443-5957  
sleslie@calasiancc.org

## **U.S. Small Business Administration**

Armida Brother  
Los Angeles District Office  
330 N. Brand Blvd. Suite 1200  
Glendale, CA 91203  
818-552-3233  
Armada.brother@sba.gov







# SUSTAINABLE ENERGY GREEN POWER

**“Our mission is to provide world class service in design, engineering and management for projects, which create resource-efficient, reliable and productive solutions of value to our clients.”**



**Engineering**

**Energy**

**Efficiency**

**Environmental**

**Solutions**

## **ICI ENGINEERS, INC.**

4000 W. Valley Blvd.,  
Suite 105  
Walnut, CA 91789  
909.444.1800 P  
909.444.1807 F

[www.iciengineers.com](http://www.iciengineers.com)



# Together

---

## We're Generating More Than Electricity

---

Southern California Edison proudly supports Diverse Business Enterprises through bidding opportunities, technical assistance and capacity building. We have spent more than \$4 billion with these firms over the last 4 years.

**Southern California Edison, an Edison International company,  
is proud to support the  
Los Angeles Sustainability Coalition**

***2015 Sustainability Construction Forum***

For information on Supplier Diversity and  
Development, please visit our website  
at: [sce.com/sd](http://sce.com/sd)  
1-800-275-4962



FOR OVER 100 YEARS...LIFE. POWERED BY EDISON.



### Professional Profile

Dr. Sherman Gay is a dynamic leader who has excelled in the areas of public agency program development, federal government compliance and community relations. Results-oriented, he is a business outreach professional with over 20 years of expertise in the public sector, holding the responsibility for providing outreach support to all Metro key departments and the Los Angeles business community, and extensive experience in establishing guidelines for uniformity of the procurement process, business development, executing pre bid conferences, and developing construction cost price analysis for bids and contracts.

**WHO ARE YOU GOING TO CALL???????**

**Phone: 310-701-5322**

**PUBLIC CONNECTIONS: "PROVIDES SPECIAL RELATIONSHIPS"**





# Civil & Traffic Engineering

## Trademark Projects

Crenshaw/LAX Transit Corridor Project (Los Angeles, Inglewood)

Sixth Street Viaduct Replacement Project (Los Angeles)

Regional Connector (Los Angeles)

I-405 Sepulveda Pass Improvements Project (Los Angeles)

## WHO WE ARE

V&A, Inc. is a team of experts at delivering civil and traffic engineering, construction management and third-party coordination for large scale construction projects. The V&A, Inc. team is comprised of registered Civil and Traffic Engineers who have been involved from concept to completion in many of the largest design-build projects in Southern California. V&A, Inc. President, Jose Valle, has built a firm of highly qualified individuals that have delivered plans on accelerated time frames for several high profile design-build projects. This has made V&A the go to Engineering Company in the Los Angeles Metropolitan area. V&A, Inc. is a DBE, MBE and SBE firm certified by the Los Angeles County Metropolitan Transportation Authority (Metro) and the Port of Long Beach (POLB).

## Contact US

530 S. Hewitt St. Suite 121

Los Angeles, CA 90013

Ph. 213.972.9700

Fax. 213.972.9707

[www.va-incorp.com](http://www.va-incorp.com)